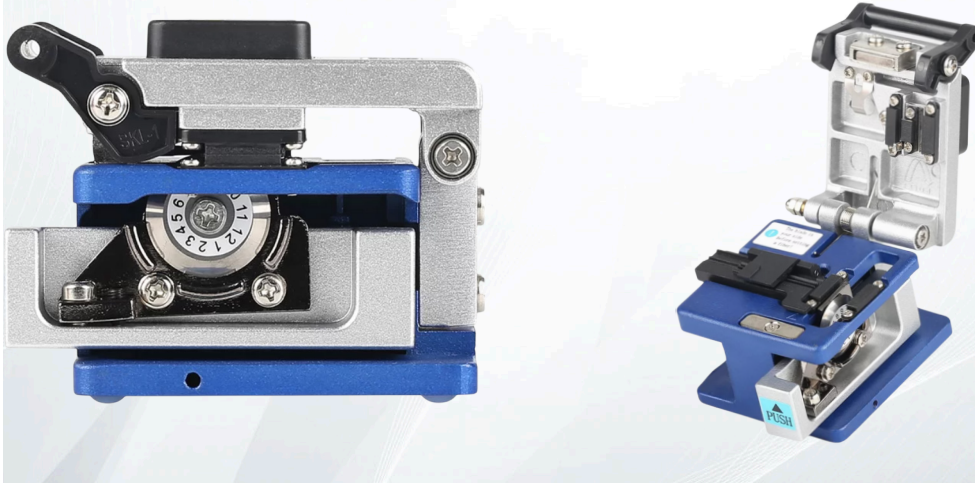


Fiber Cleaver - FC-6S

The FC-6S Fiber Cleaver is a high-precision tool designed for cleaving optical fiber with superior accuracy. It is an essential tool for fiber optic fusion splicing, ensuring clean and smooth fiber end-faces, which directly impact the performance of fiber optic connections.



Features

- High-precision diamond blade for clean and accurate fiber cleaving
- One-step operation for easy and efficient use
- Adjustable blade with multiple cutting positions to extend service life
- Can handle single fiber and ribbon fiber (up to 12 fibers)
- Automatic fiber chip collection system
- Compact and lightweight design for portable field use
- Long blade lifespan with up to 48,000 cleaves
- Compatible with 250μm, 900μm, 3.0mm fiber, and flat cable
- Dimensions 63mm × 76mm × 63mm
- Weight Approx. 280g
- Fiber Diameter 125μm (coating: 250μm & 900μm)

