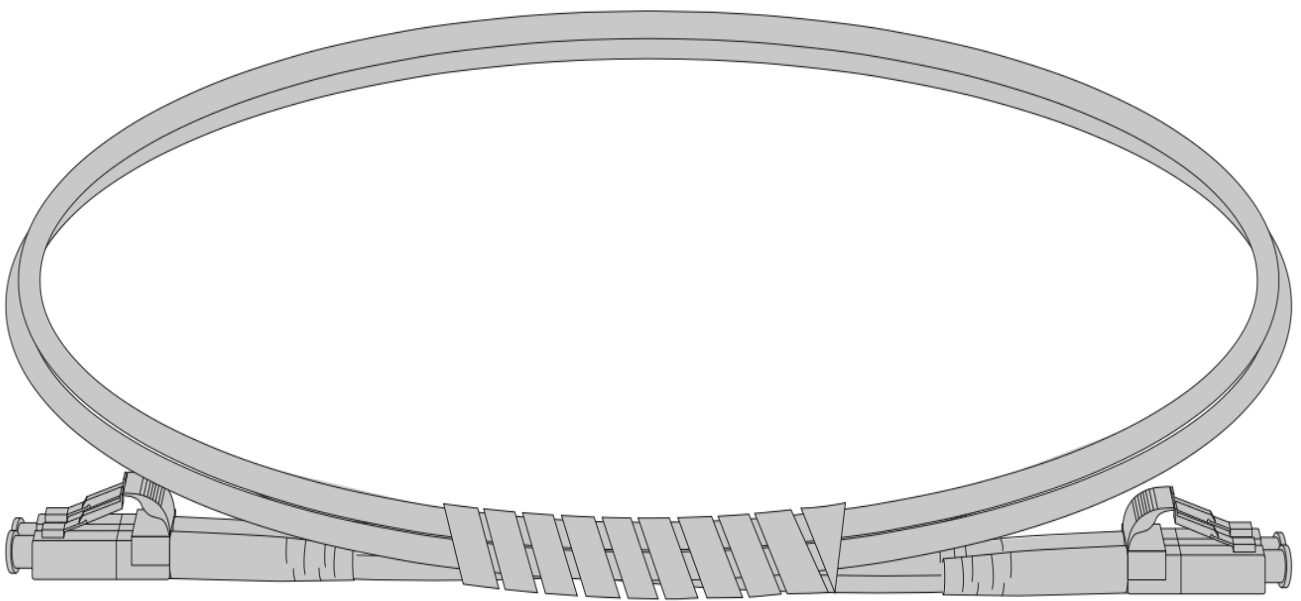


# FIBER OPTIC PATCH CABLES

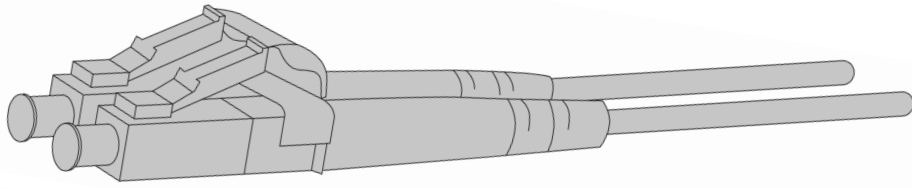


**Quick Start Guide**

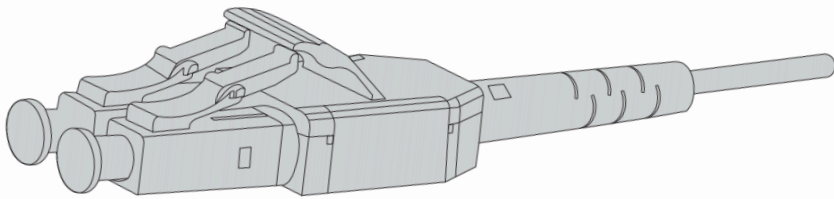
**V 2.2**

Copyright © 2021 Fibline All Rights Reserved.

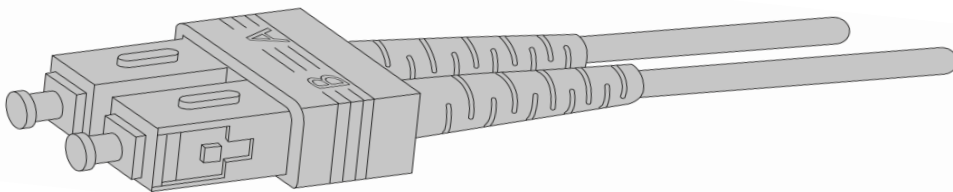
# 1. Product View



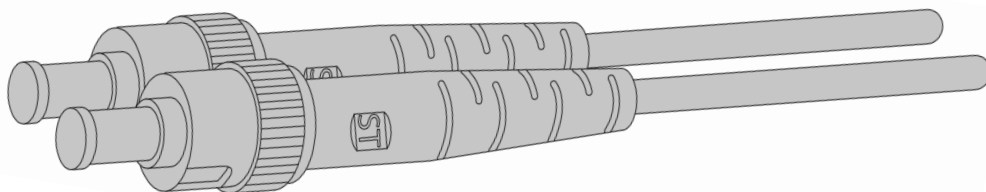
LC-Lucent Connector



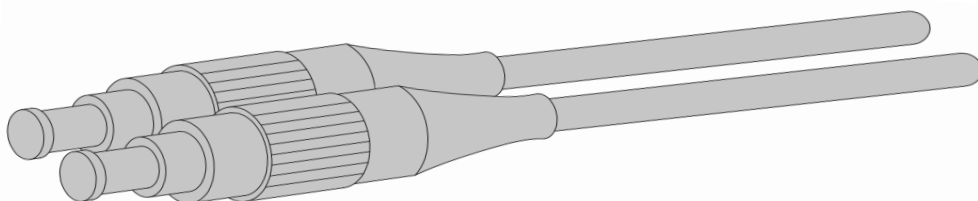
Standard Clip Lc Uniboot



SC-Subscriber Connector

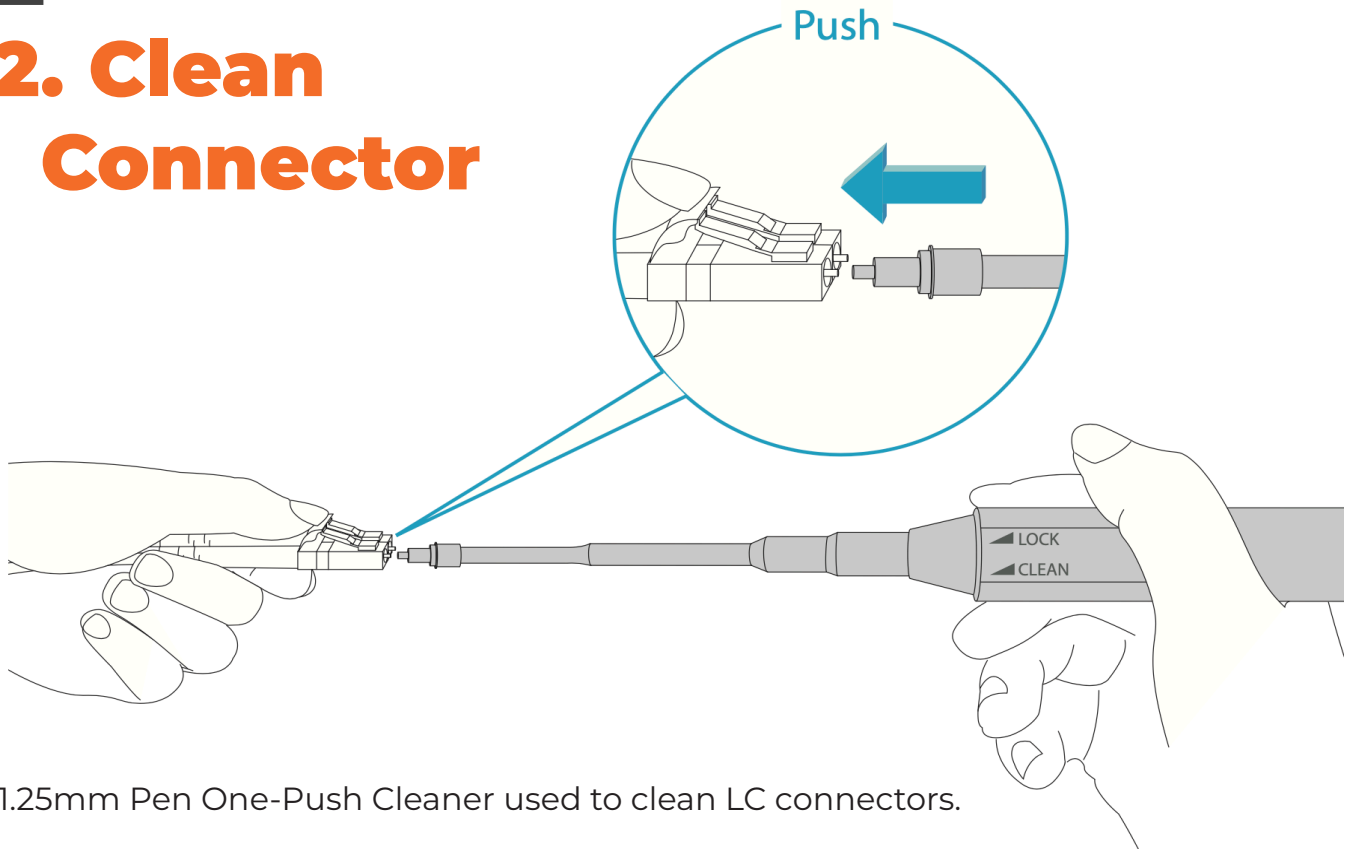


ST-Straight Tip

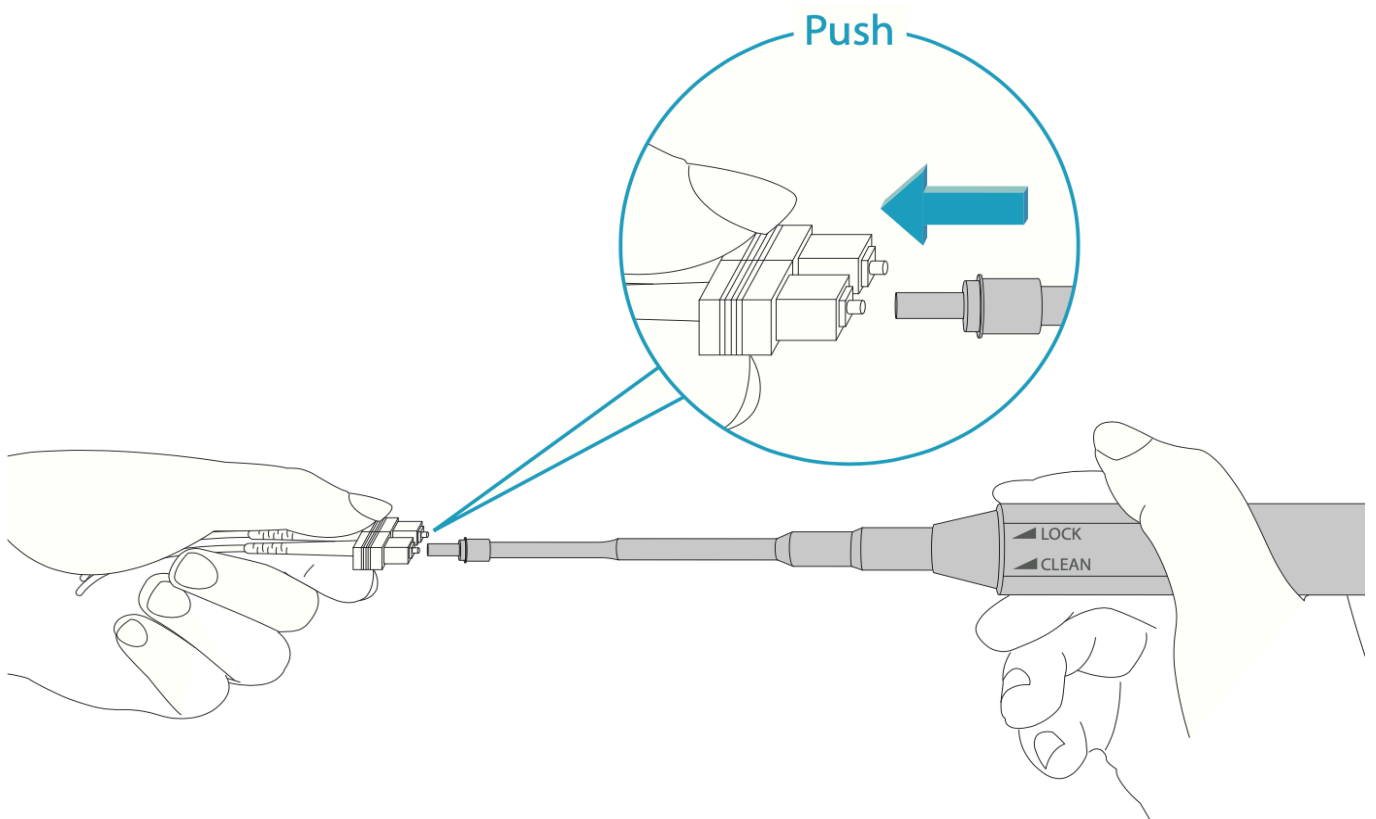


FC-Ferrule Connector

## 2. Clean Connector

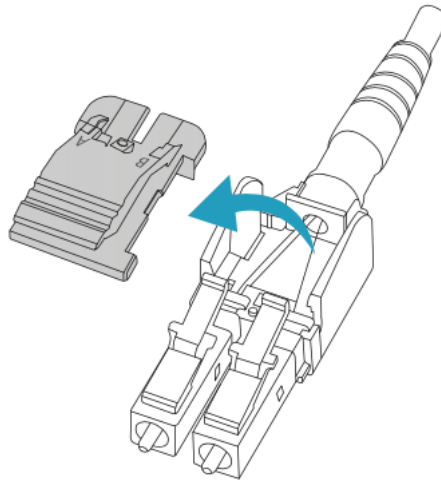


1.25mm Pen One-Push Cleaner used to clean LC connectors.

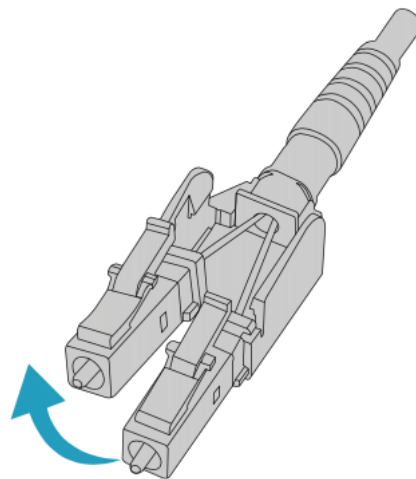


2.5mm Pen One-Push Cleaner used to clean SC/ST/FC connectors.

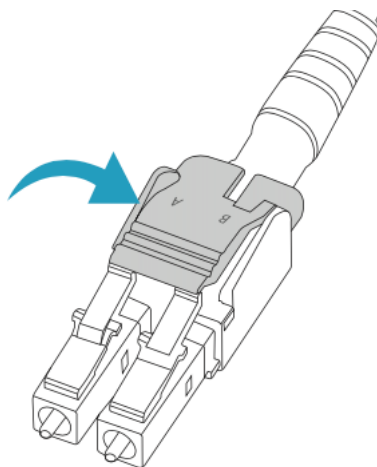
### 3. Polarity Reversal of LC Uniboot



Open connector top



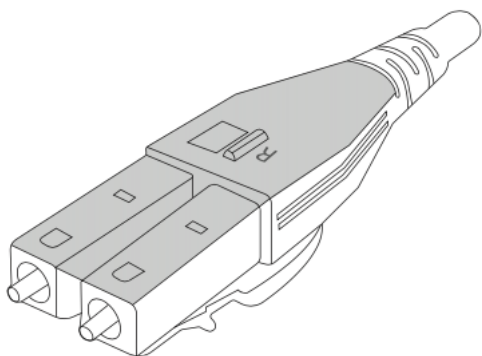
Switch the polraity A-B to A-A



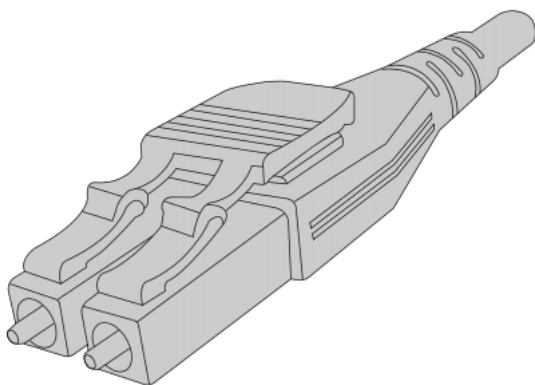
Close connector top

Copyright © 2021 Fibline All Rights Reserved.

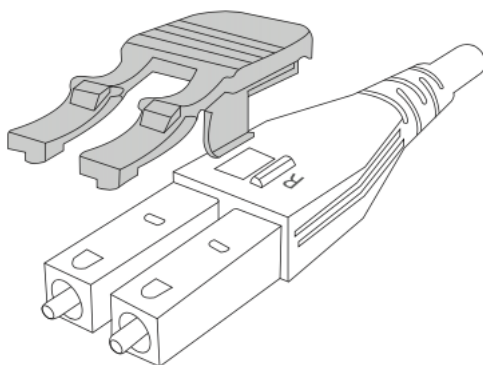
## 4. Polarity Reversal of Flat Clip LC UUniboot



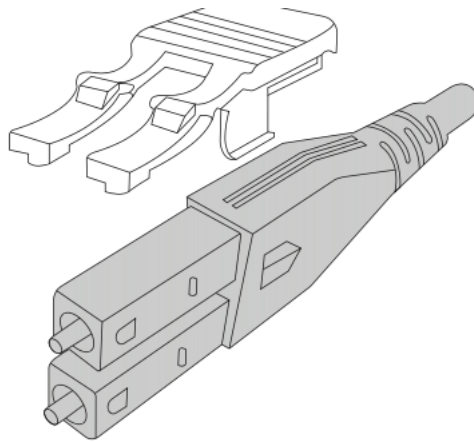
Open connector top



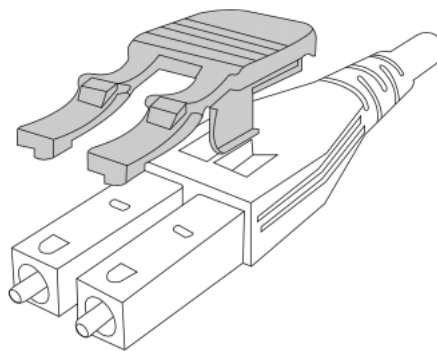
Switch the polarity A-B to A-A



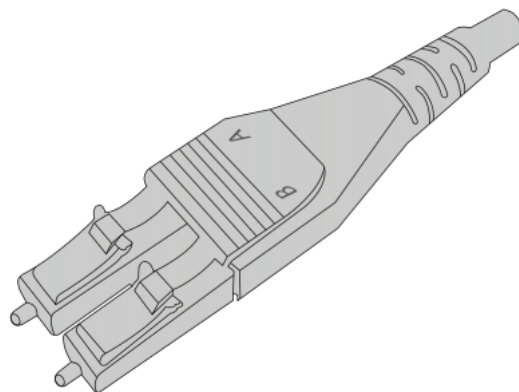
Close connector top



Rotate the connector body 180°



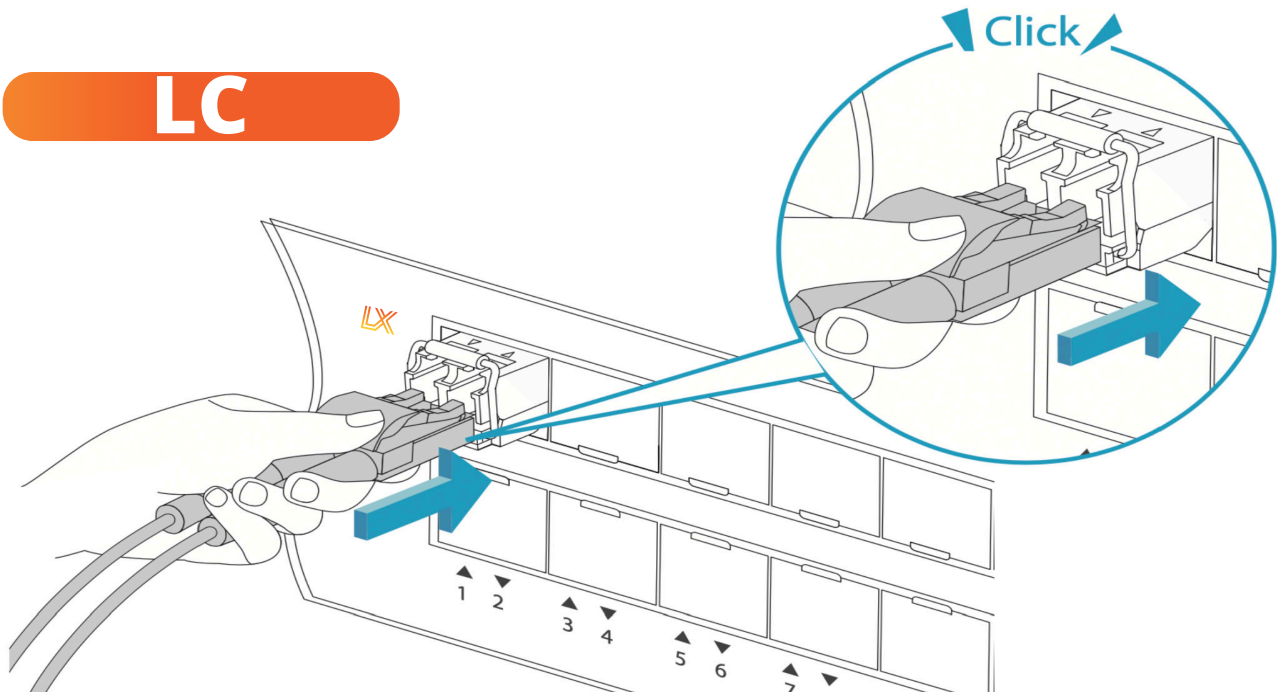
Reposition the clip



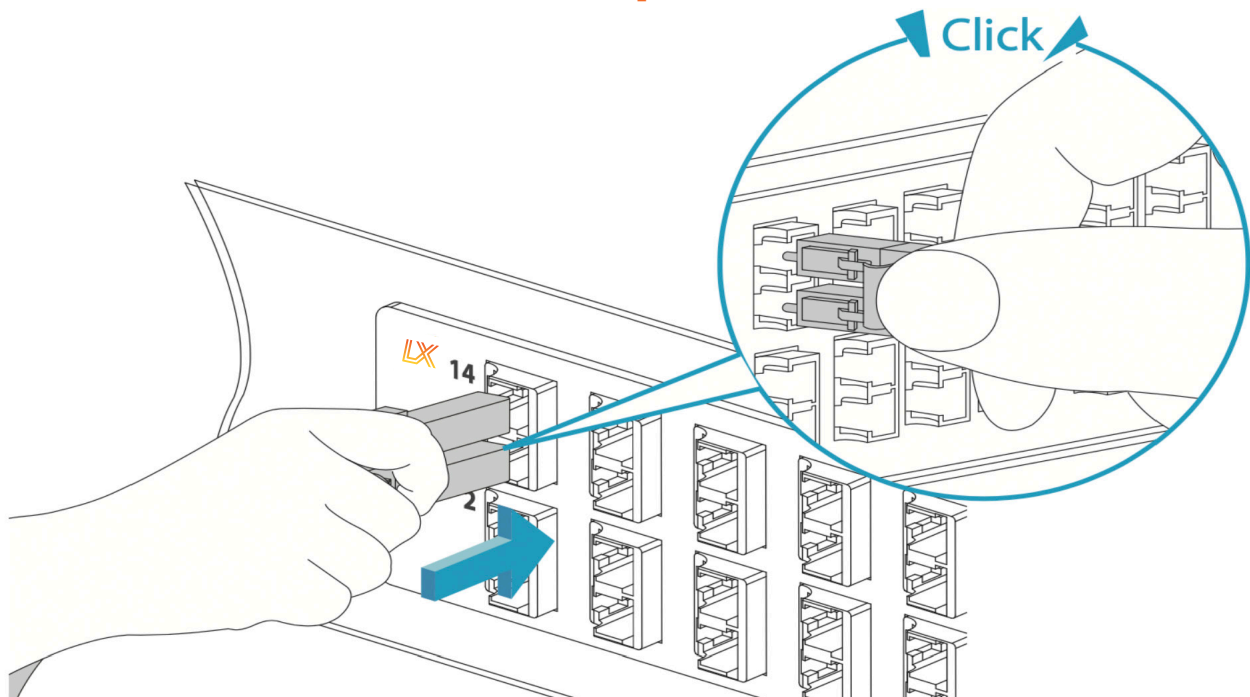
The polarity is reversed

## 5. Install the LC Connector into Transceiver Module

**LC**



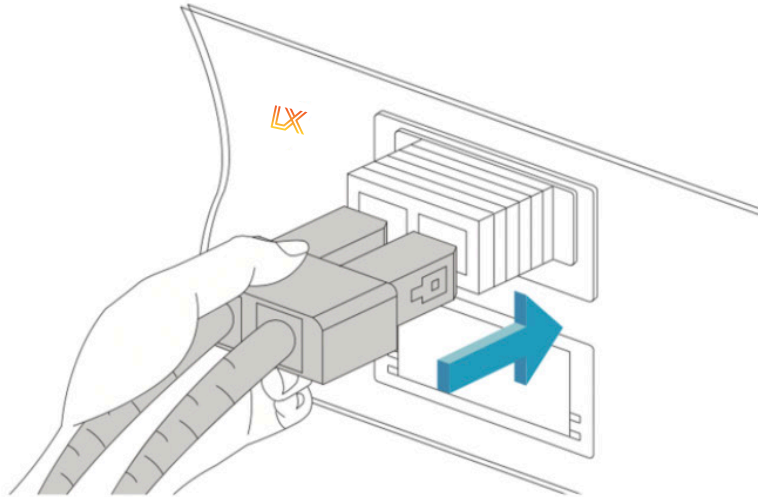
### Install the LC Connector into Adapter



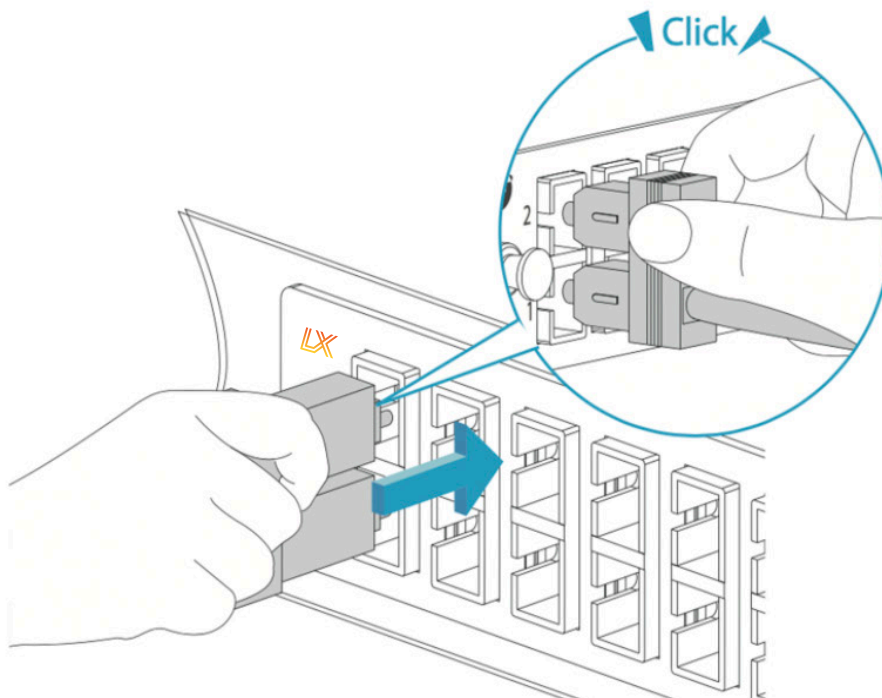
#### NOTE:

1. When installing, align the key on the connector body with the keyway on the transceiver or adapter.
2. When removing the LC connector, press the connector latch downward.

## 6. Install the SC Connector into Transceiver Module

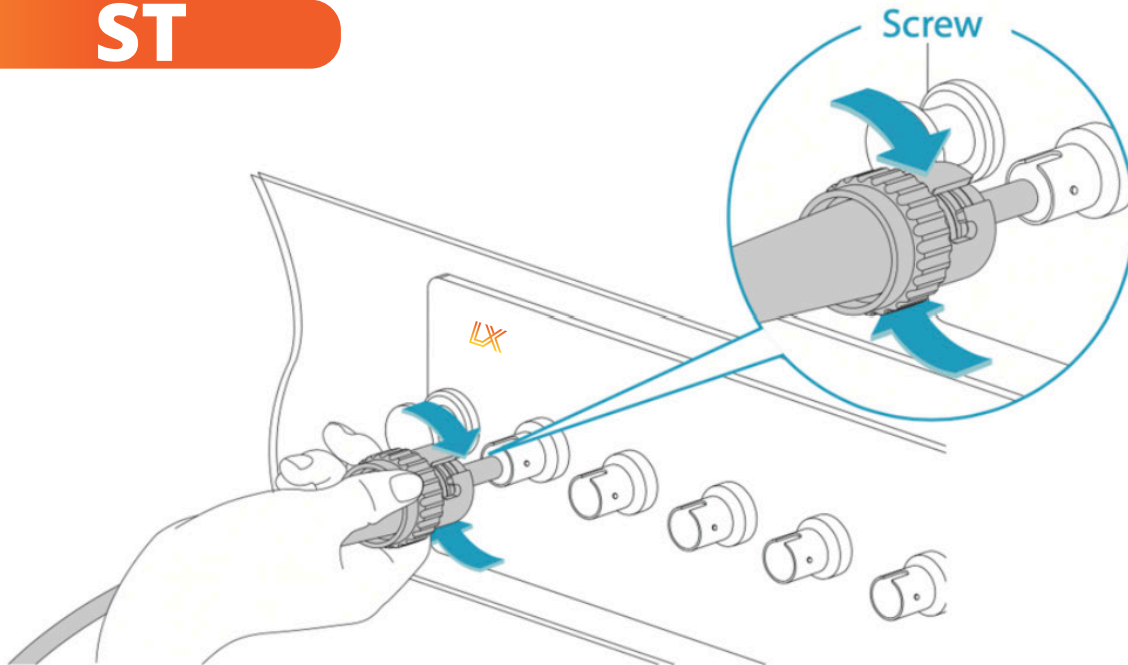
**SC**

### Install the SC Connector into Adapter



## 7. Install the ST Connector into Adapter

**ST**



**Install the FC Connector into Adapter**

**FC**

