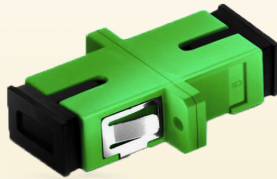


SC ADAPTORS

Fibline offers a range of high quality SC adaptors which have high precision alignment sleeves for reliability and improved reconnectability. For singlemode applications a ceramic sleeve is supplied to ensure a high precision alignment. For multimode applications a phosphor bronze sleeve is supplied. The housing is available in different colours with options for flange or flangeless body, metal clips or inbuilt clips



SC/APC SX SM



SC/PC SX SM



SC/PC SX MM



SC/APC DX SM



SC/PC DX SM



SC/PC DX MM

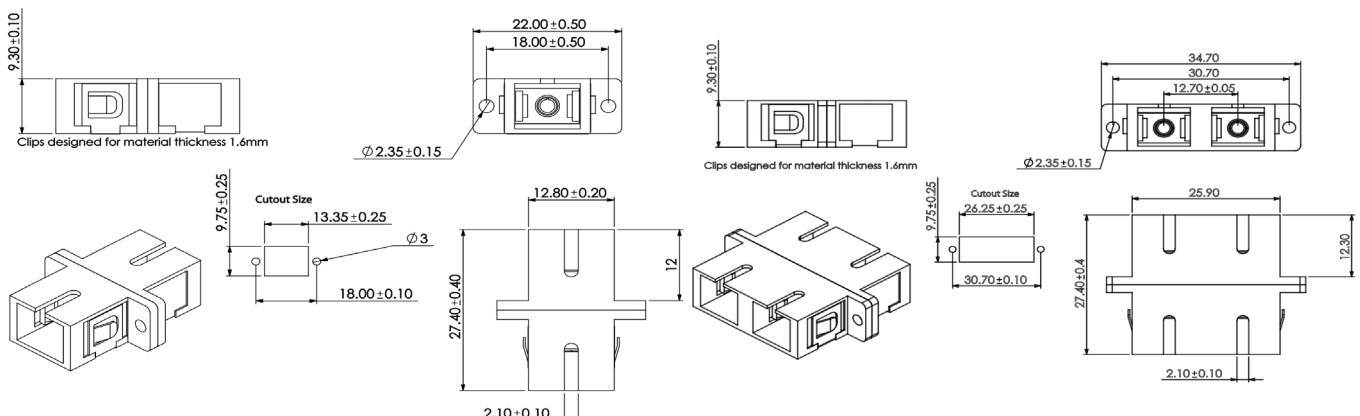
Applications

- Telecommunication Network
- CATV-Cable Television
- Data centres, premise installations, telecommunication networks
- Ethernet, fibre channel, ATM
- LAN, MAN and WAN

Features

- Complies with IEC 61754-4 and IEC 60784-14 standards
- High precision alignment sleeve
- Low insertion loss and improved reconnectability
- RoHS, REACH SvHC compliant
- Available in simplex and duplex adaptors

Technical Drawings



Technical Specification



	Ceramic	Phosphor Bronze	Conformance
Insertion Loss (Typ)	0.1 dB	0.15 dB	IEC 61300-3-4
Mating Durability	-	500	IEC 61300-2-2
Receptacle Retention force	-	2N - 5.9N	IEC 61754-4
Operating temperature	-	-25 to +70, 12 cycles	IEC 61300-2-22

Mechanical Properties	Criteria	Effect	Conformance
Mechanical endurance	500 matings	<0.2 dB change	IEC 61300-2-2
Vibration	10-55Hz, 0.75 amplitude	<0.2 dB change	IEC 61300-2-1
Drop	Drop height 1m, 5 drops	<0.2 dB change	IEC 61300-2-12
Cable retention	Magnitude 90 N	<0.2 dB change	IEC 61300-2-4
Cable retention	1.5kg - 2.5kg 2-3mm cable	<0.2 dB change	IEC 61300-2-5
Cable retention	-25 to +70, 12 cycles	<0.2 dB change	IEC 61300-2-22
Cable retention	-25 for 96 hrs	<0.2 dB change	IEC 61300-2-17
Cable retention	+70 for 96 hrs	<0.2 dB change	IEC 61300-2-18

SC connector PC and APC- Singlemode

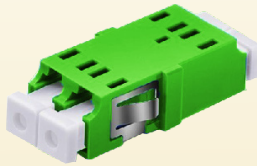
Optical Performance	High Performance	Premium	Standard	Conformance
Insertion loss (Typ)	0.10 dB	0.15 dB	0.25 dB	IEC 61300-3-4
Insertion loss (97%)	10.20 dB	0.30 dB	0.40 dB	IEC 61300-3-4
Ave/Master	0.08 dB	0.12 dB	0.18 dB	IEC 61300-3-4
Ave/Random	0.08 dB	0.12 dB	0.18 dB	IEC 61300-3-34
Return Loss	55/70 dB	0.12 dB	55/65 dB	IEC 61300-3-6

SC connector PC - Multimode

Optical Performance	High Performance	Premium	Standard	Conformance
Insertion loss (Typ)	-	0.15 dB	0.30 dB	IEC 61300-3-4
Insertion loss (97%)	-	0.25 dB	0.40 dB	IEC 61300-3-4
Ave/Master	-	0.08 dB	0.15 dB	IEC 61300-3-4
Ave/Random	-	0.10 dB	0.20 dB	IEC 61300-3-4

LC ADAPTORS

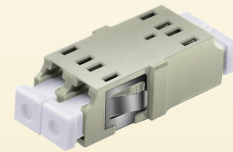
Fibline offers a range of quality LC adaptors which have high precision alignment sleeves for improved reliability and better reconnectability. The LC adaptors come with ceramic sleeves for singlemode and phosphor bronze sleeves for multimode. The housing is available in different colours with options for flange or flangeless body and metal, or inbuilt, clips.



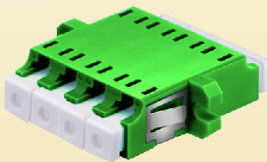
LC/APC SX SM



LC/PC SX SM



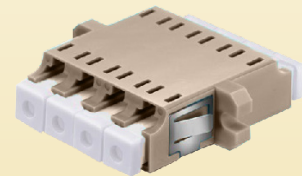
LC/PC SX MM



LC/APC Quad SM



LC/PC Quad SM

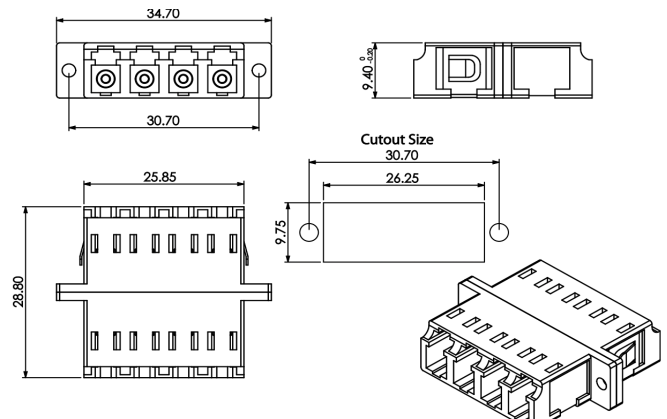
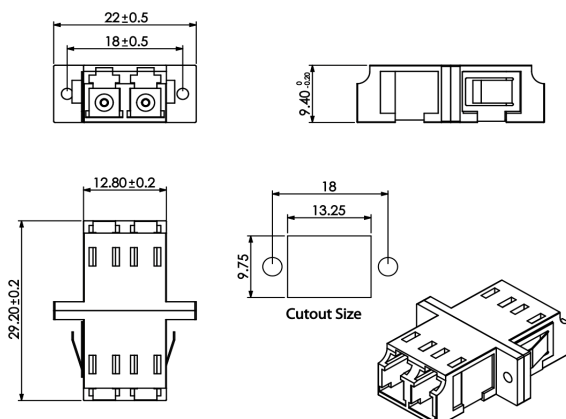


LC/PC Quad MM

Applications

- Telecommunication Network
- CATV-Cable Television
- Data centres, premise installations, telecommunication networks
- Ethernet, fibre channel, ATM
- LAN, MAN and WAN

Technical Drawings



Features

- Complies with IEC 61754-20
- High precision alignment sleeve
- Low insertion loss and high reconnectability
- RoHS, REACH SvHC compliant
- Available in simplex, duplex and quad adaptors

Technical Specification



	Ceramic	Phosphor Bronze	Conformance
Insertion Loss (Typ)	0.1 dB	0.15 dB	IEC 61300-3-4
Mating Durability	-	500	IEC 61300-2-2
Receptacle Retention force	-	2N - 5.9N	IEC 61754-20
Operating temperature	-	-25 to +70, 12 cycles	IEC 61300-2-22

Mechanical Properties	Criteria	Effect	Conformance
Mechanical endurance	500 matings	<0.2 dB change	IEC 61300-2-2
Vibration	10-55Hz, 0.75 amplitude	<0.2 dB change	IEC 61300-2-1
Drop	Drop height 1m, 5 drops	<0.2 dB change	IEC 61300-2-12
Cable retention	Magnitude 90 N	<0.2 dB change	IEC 61300-2-4
Cable retention	1.5kg - 2.5kg 2-3mm cable	<0.2 dB change	IEC 61300-2-5
Cable retention	-25 to +70, 12 cycles	<0.2 dB change	IEC 61300-2-22
Cable retention	-25 for 96 hrs	<0.2 dB change	IEC 61300-2-17
Cable retention	+70 for 96 hrs	<0.2 dB change	IEC 61300-2-18

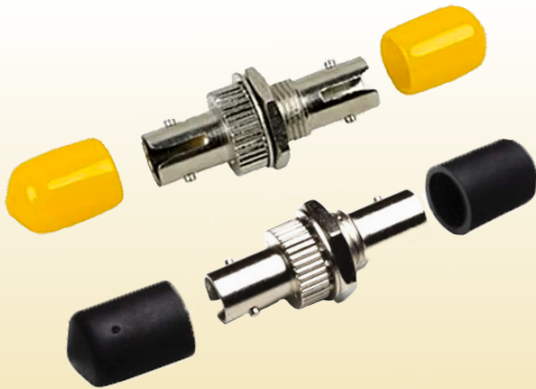
LC connector PC and APC- Singlemode

Optical Performance	High Performance	Premium	Standard	Conformance
Insertion loss (Typ)	0.10 dB	0.15 dB	0.25 dB	IEC 61300-3-4
Insertion loss (97%)	10.20 dB	0.30 dB	0.40 dB	IEC 61300-3-4
Ave/Master	0.08 dB	0.12 dB	0.18 dB	IEC 61300-3-4
Ave/Random	0.08 dB	0.12 dB	0.18 dB	IEC 61300-3-34
Return Loss	55/70 dB	0.12 dB	55/65 dB	IEC 61300-3-6

LC connector PC - Multimode

Optical Performance	High Performance	Premium	Standard	Conformance
Insertion loss (Typ)	-	0.15 dB	0.30 dB	IEC 61300-3-4
Insertion loss (97%)	-	0.25 dB	0.40 dB	IEC 61300-3-4
Ave/Master	-	0.08 dB	0.15 dB	IEC 61300-3-4
Ave/Random	-	0.10 dB	0.20 dB	IEC 61300-3-4

ST ADAPTORS



Fibline ST adaptors have high precision alignment sleeves for reliability and better reconnectability. ST adaptors come with a ceramic sleeve for the singlemode and phosphor bronze sleeve for the multimode. The housing is available in single D or double D types.

Applications

- Telecommunication Network
- CATV-Cable Television
- Data centres, premise installations, telecommunication networks
- Ethernet, fibre channel, ATM
- LAN, MAN and WAN

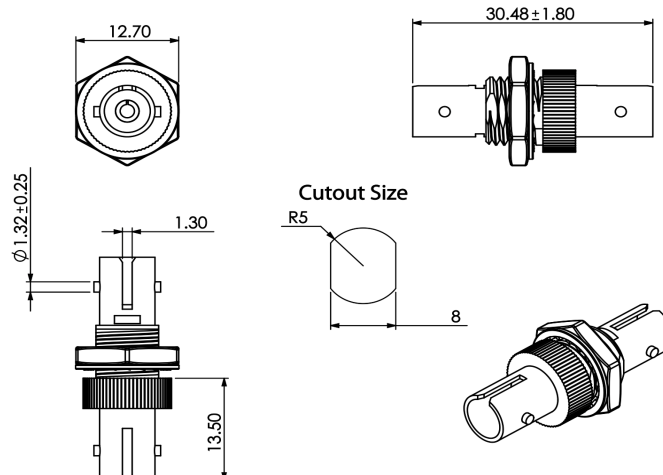
Features

- Complies with IEC 61754-20
- High precision alignment sleeve
- Low insertion loss and high reconnectability
- RoHS, REACH SvHC compliant
- Available in simplex only

Technical Specification

	Ceramic	Phosphor Bronze	Conformance
Insertion Loss (Typ)	0.1 dB	0.15 dB	IEC 61300-3-4
Mating Durability	-	500	IEC 61300-2-2
Receptacle Retention force	-	1N - 2.5N	IEC 61754-20
Operating temperature	-	-25 to +70, 12 cycles	IEC 61300-2-22

Technical Drawings



FC ADAPTORS



Fibline offers a range of high quality FC adaptors which have precision alignment sleeves for high reliability and better reconnectability. FC adaptors come with ceramic sleeves for the singlemode and phosphor bronze sleeve for the multimode. The housing has a metal body and a M8 nut

Applications

- Telecommunications networks
- Local area networks
- Data processing networks
- Cable television
- Premises distribution
- Test and laboratory equipment
- Industrial and military application

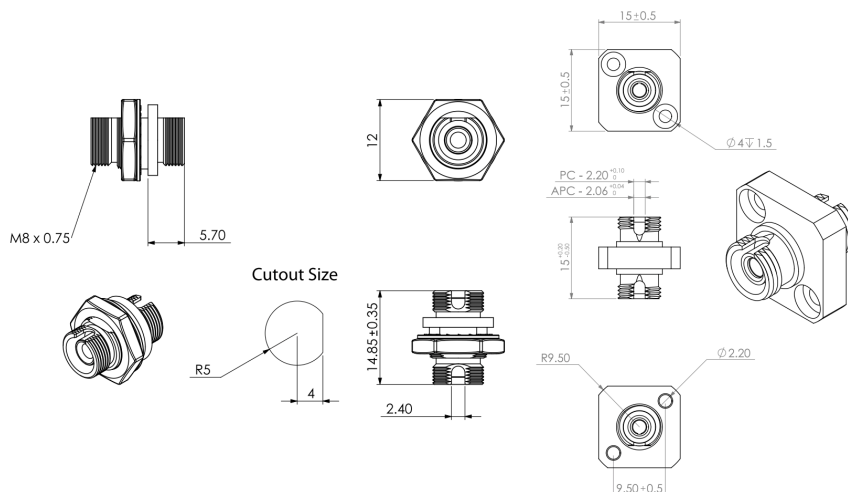
Features

- Complies with IEC 61754-13 and TIA 604-4-A
- High precision alignment sleeve
- Low insertion loss and high reconnectability
- Narrow key
- RoHS, REACH SvHC compliant
- Available in simplex only

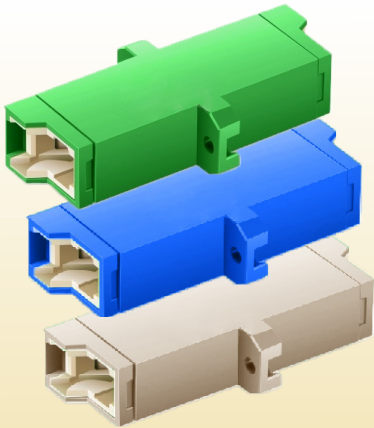
Technical Specification

	Ceramic	Phosphor Bronze	Conformance
Insertion Loss (Typ)	0.1 dB	0.15 dB	IEC 61300-3-4
Mating Durability	-	500	IEC 61300-2-2
Receptacle Retention force	-	2N – 5.9N	IEC 61754-13
Operating temperature	-	-25 to +70, 12 cycles	IEC 61300-2-22

Technical Drawings



LSH ADAPTORS



Fibline offers a range of high quality E2000 adaptors which have high precision alignment sleeves for reliability and better reconnectability. Each E2000 connector has an inbuilt mechanism to open the shutter and guide the ferrule in the alignment sleeve. E2000 adaptors come with a ceramic sleeves for the singlemode and phosphor bronze sleeves for the multimode. The housing is available in different colours and a flangeless body option.

Applications

- Suitable for high power laser applications
- Telecommunications networks
- WDM, DWDM applications
- Testing and measurement equipment

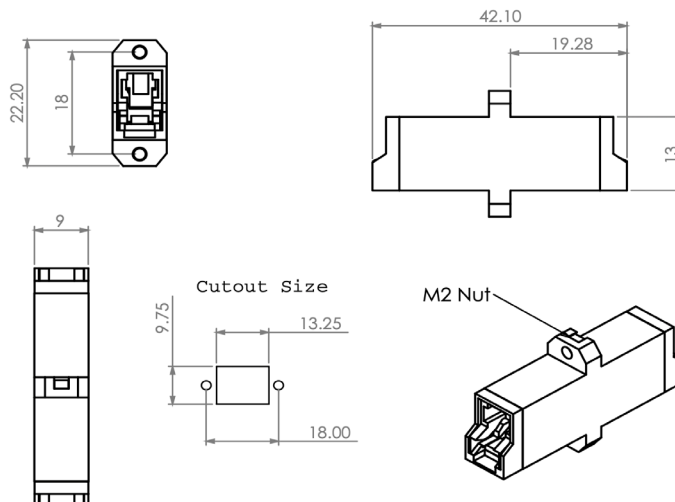
Features

- Complies with IEC 61754-15
- High precision alignment sleeve
- Low insertion loss and high reconnectability
- RoHS, REACH SvHC compliant
- Available in simplex only

Technical Specification

	Ceramic	Phosphor Bronze	Conformance
Insertion Loss (Typ)	0.1 dB	0.15 dB	IEC 61300-3-4
Mating Durability	-	500	IEC 61300-2-2
Receptacle Retention force	-	2N – 5.9N	IEC 61754-20
Operating temperature	-	-25 to +70, 12 cycles	IEC 61300-2-22

Technical Drawings



MT-RJ ADAPTORS



MT-RJ Standard Adaptor



MT-RJ Adaptor with SC Footprint

An optical fibre adapter or uniter is used to mate two connectors together, usually mounted in a distribution panel or wall box. In most cases it is the critical part of the system that aligns the ferrule part of the connectors keeping the fibres in perfect alignment. In the case of the MT-RJ and MPO the alignment is carried out by two small pins fitted to one of the connectors and the adapter is purely to support and lock the connectors. When joining MT-RJ connectors, one connector must always be male with pins and one must be female without pins.

Applications

- Plug-jack (RJ-45) design
- TIA/EIA568-A Compliant
- Precision moulded for proper alignment
- Available in black and beige coloured body

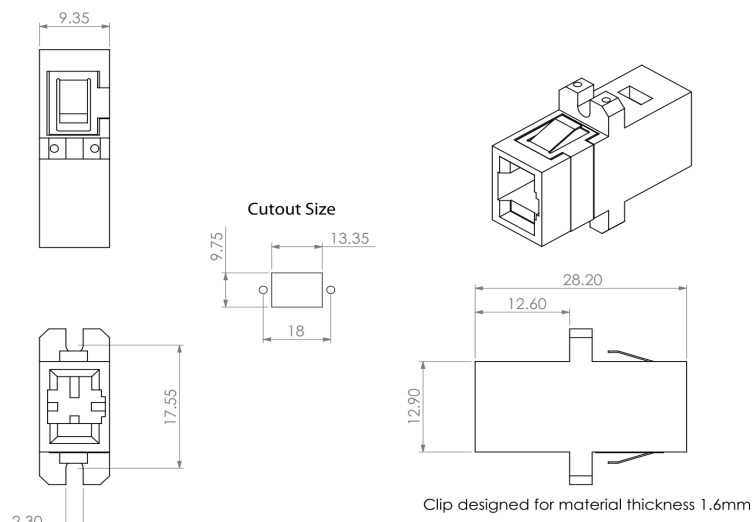
Features

- Gigabit Ethernet, Asynchronous
- Transmission Method (ATM)
- Premise installations
- Industrial and military applications

Technical Specification

	Singlemode	Conformance
Insertion Loss (Typ)	0.2dB	IEC 61300-3-4
Mating Durability	500 matings	IEC 61300-2-2
Receptacle Retention force	2N - 5.9N	IEC 61754-13
Vibration Test	10 - 55Hz 0.75 amplitude	IEC 61300-2-1
Drop test	Drop height 1m, 5 drops	IEC 61300-2-12
Operating temperature	-25 to +70, 12 cycles	IEC 61300-2-22

Technical Drawings



IMAGES	PRODUCT NAME	PRODUCT CODE
	Adapter - SC Single Mode Duplex Plastic - Without Cover - With Flange Blue Color	9SDXDBPNCF12
	Adapter - SC Single Mode Duplex Plastic - Without Cover - With Flange Green Color	9SDXDBPNCF3
	Adapter - SC OM2 Duplex Plastic - Without Cover - With Flange Beige Color	9SDXESPNCF8
	Adapter - SC OM3 Duplex Plastic - Without Cover - With Flange Aqua Color	9SDXBSPNCF6
	Adapter - SC OM4 Duplex Plastic - Without Cover - With Flange Violet Color	9SDXCPNCF11
	Adapter - SC Single Mode Simplex Plastic - Without Cover - With Flange Blue Color	9SSDBPNCF12
	Adapter - SC APC Single Mode Simplex Plastic - Without Cover - With Flange Green Color	9SSDBPNCF3
	Adapter - SC OM2 Simplex Plastic - Without Cover - With Flange Beige Color	9SSESPNCF8
	Adapter - SC OM3 Simplex Plastic - Without Cover - With Flange Aqua Color	9SSBSPNCF6
	Adapter - SC OM4 Simplex Plastic - Without Cover - With Flange Violet Color	9SSCPNCF11
	Adapter - FC Single Mode Simplex Metallic - Without Cover - With Flange Grey Color	9FSDBMNCF10
	Adapter - ST Single Mode Simplex Metallic - Without Cover - With Flange Grey Color	9TSDBMNCF10

IMAGES	PRODUCT NAME	PRODUCT CODE
	Adapter - LC Single Mode Duplex Plastic - Without Cover - With Flange Blue Color	9LDXDBPNCF12
	Adapter - LC Single Mode Duplex Plastic - Without Cover - With Flange Green Color	9LDXDBPNCF3
	Adapter - LC OM2 Duplex Plastic - Without Cover - With Flange Beige Color	9LDXESPNCF8
	Adapter - LC OM3 Duplex Plastic - Without Cover - With Flange Aqua Color	9LDXBSPNCF6
	Adapter - LC OM4 Duplex Plastic - Without Cover - With Flange Violet Color	9LDXCPNCF11
	Adapter A Type - MTP/MPO-8/12/24 Plastic - Without Cover - With Flange Black Color	9MPNCF2A
	Adapter B Type - MTP/MPO-8/12/24 Plastic - Without Cover - With Flange Black Color	9MPNCF2B
	Adapter - E2000 Single Mode Simplex Plastic - Without Cover - With Flange Green Color	9E2SDBPNCF3
	Adapter - E2000 Single Mode Simplex Plastic - Without Cover - With Flange Blue Color	9E2SDBPNCF12
	Adapter - E2000 OM2 Simplex Plastic - Without Cover - With Flange Beige Color	9E2SESPNCF8
	Adapter - E2000 OM3 Simplex Plastic - Without Cover - With Flange Aqua Color	9E2SBSPNCF6
	Adapter - E2000 OM4 Simplex Plastic - Without Cover - With Flange Violet Color	9E2SBSPNCF6